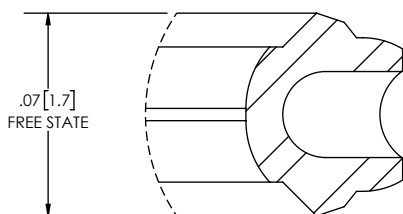
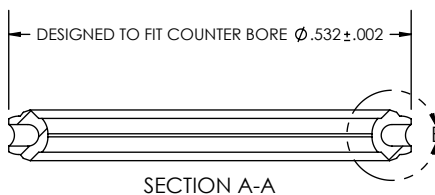
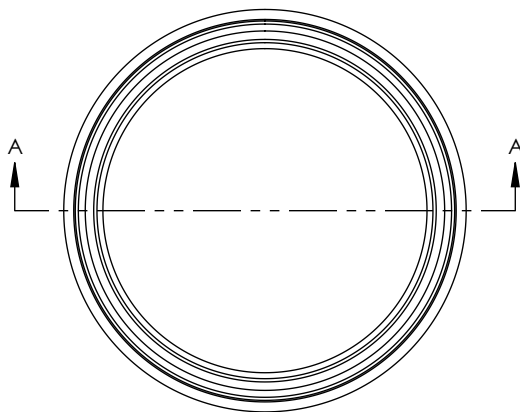
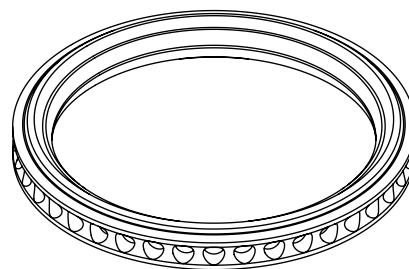


REVISIONS			
REV.	DESCRIPTION	APPROVED	DATE
2		GMD	6/13/23



DETAIL B
SCALE 16 : 1



MICROFLEX TECHNOLOGIES PROPRIETARY INFORMATION

THIS DRAWING IS THE EXCLUSIVE PROPERTY OF MICROFLEX TECHNOLOGIES LLC, AND EMBODIES A CONFIDENTIAL DESIGN. IT HAS BEEN FORWARDED TO YOU IN STRICT CONFIDENCE FOR A SPECIFIC PURPOSE AND AS A RECIPIENT YOU AGREE NOT TO USE, DISCLOSE, REPRODUCE OR COPY IT IN WHOLE OR IN PART WITHOUT THE EXPRESS WRITTEN CONSENT OF MICROFLEX TECHNOLOGIES LLC, AND TO IMMEDIATELY RETURN THE DRAWING UPON REQUEST.

UNLESS OTHERWISE SPECIFIED:

DIMENSIONS ARE IN INCHES
DIMENSIONS IN [] ARE IN MILLIMETERS
TOLERANCES:
FRACTIONAL \pm N/A
ANGULAR: MACH $\pm .5^\circ$
TWO PLACE DECIMAL $\pm .01$
THREE PLACE DECIMAL $\pm .003$

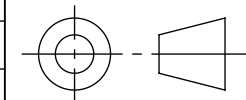
MATERIAL STAINLESS STEEL
316L VIM/VAR

FINISH N7

APPROVALS DATE

DWG: JWM	6/13/23
ENG: JWM	6/13/23
CAL: GMD	6/13/23

THIRD ANGLE PROJECTION



TITLE: MICROSEAL, TYPE 52, SERIES 60,

SIZE	SCALE	DRAWING NO.	REV
C	4:1	MS-052-062	2

DO NOT SCALE DRAWING SHEET 1 OF 1